



COMPONENTS OF PACKAGING:

ceiling bracket, ceiling canopy, power cable with connector, metal fixture, glass shade, cotton gloves, installation manual, hex key size 2, hex key size 1,5, set screw (M4x4), 3 silicone pads, plastic cable stop, 3 terminal connectors

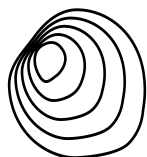
WARNING:

Installation must be carried out by a qualified electrician only.

Switch off power at main circuit panel prior to installation!

The manufacturer assumes no liability for damage occurring in transport or resulting from incorrect installation.

Instalation time: 30 minutes / 1 perso



BROKIS®

BROKIS S.R.O.
ŠPANIELOVA 1315/25
163 00 PRAHA 6 - ŘEPY
CZECH REPUBLIC

ORG. ID 64940799
VAT ID CZ64940799
C 42174 MĚSTSKÝ SOUD
V PRAZE

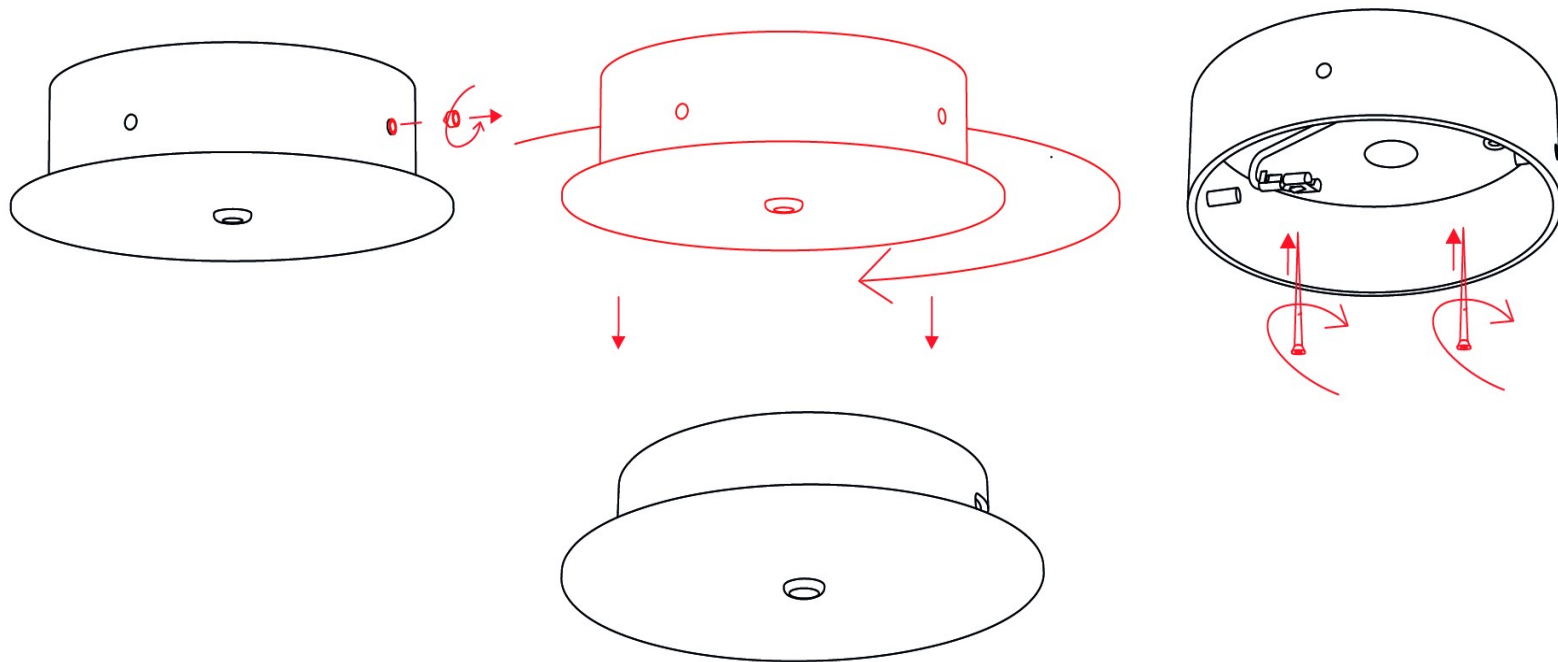
TEL +420 567 211 517
TECHNICAL@BROKIS.CZ
INFO@BROKIS.CZ
WWW.BROKIS.CZ

1. INSTALLING THE CEILING BRACKET

Prior to installation, remove the set screw from the side of the ceiling canopy and separate the two halves of the canopy.

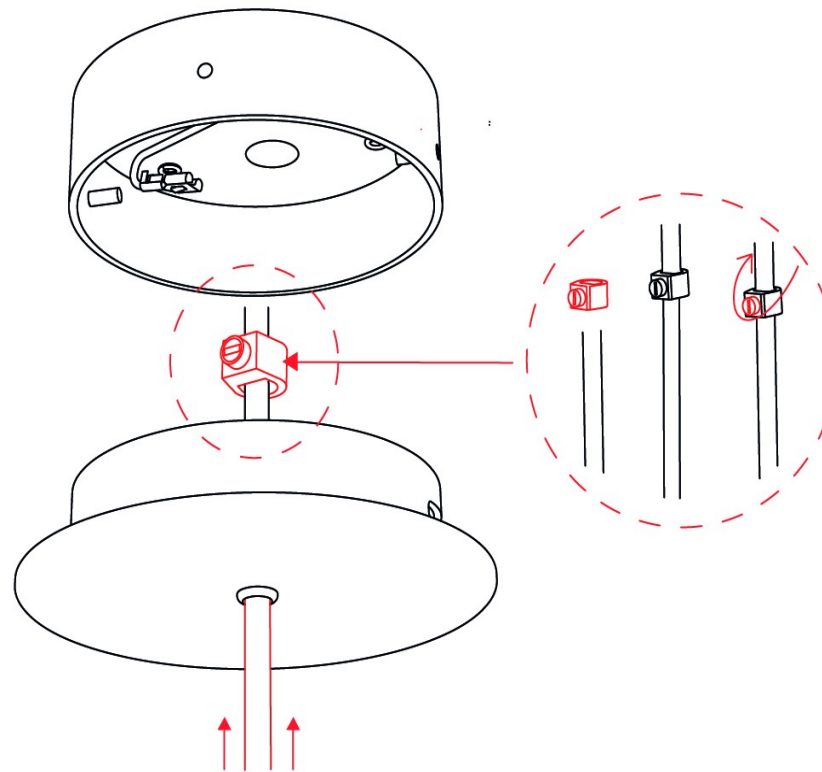
Choose anchors of sufficient strength (not included) and secure the bracket to the ceiling. With regard to various types of ceilings, we recommend consulting installation with an expert. The manufacturer assumes no liability for incorrect installation, incorrect anchors, or defects in the material to which the bracket is secured.

Secure the bracket to the ceiling using three anchors!



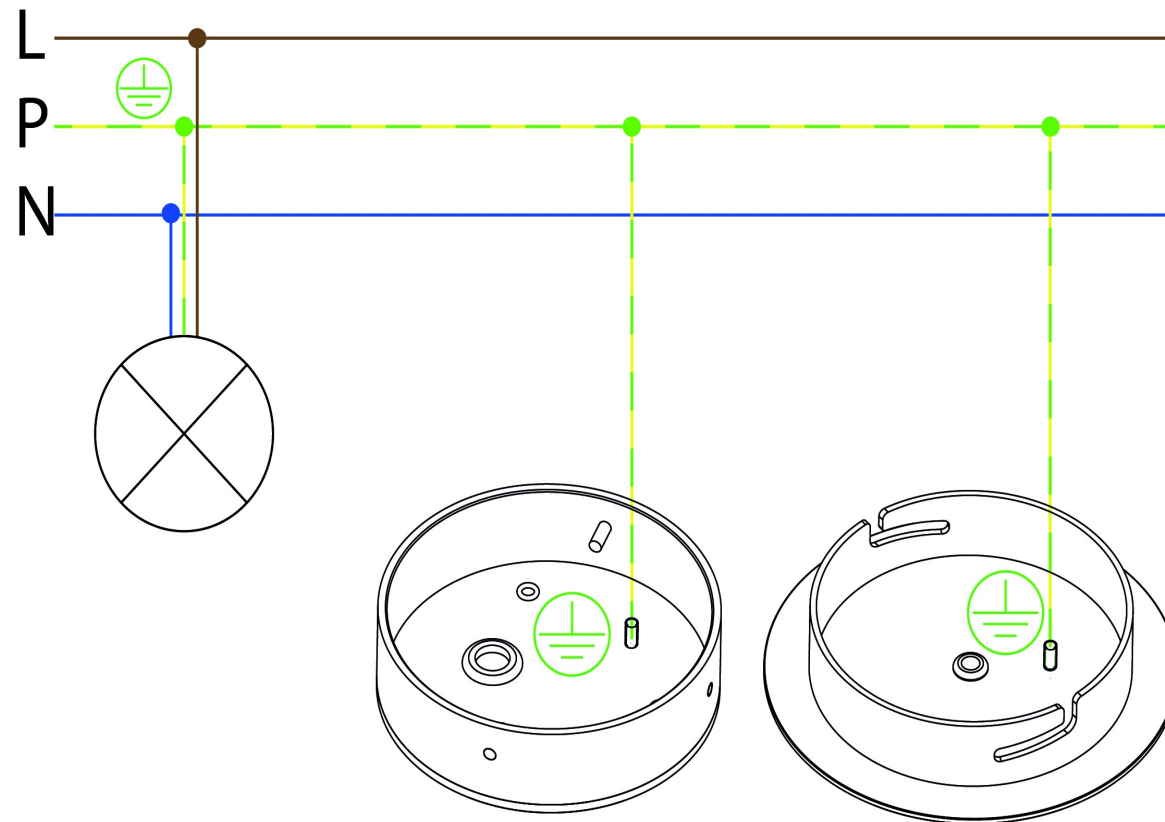
2. INSTALLING THE POWER CABLE

Pass the power cable through the metal ceiling canopy and secure it with the plastic cable stop.



3. CONNECTING THE LIGHT TO THE BUILDING WIRING

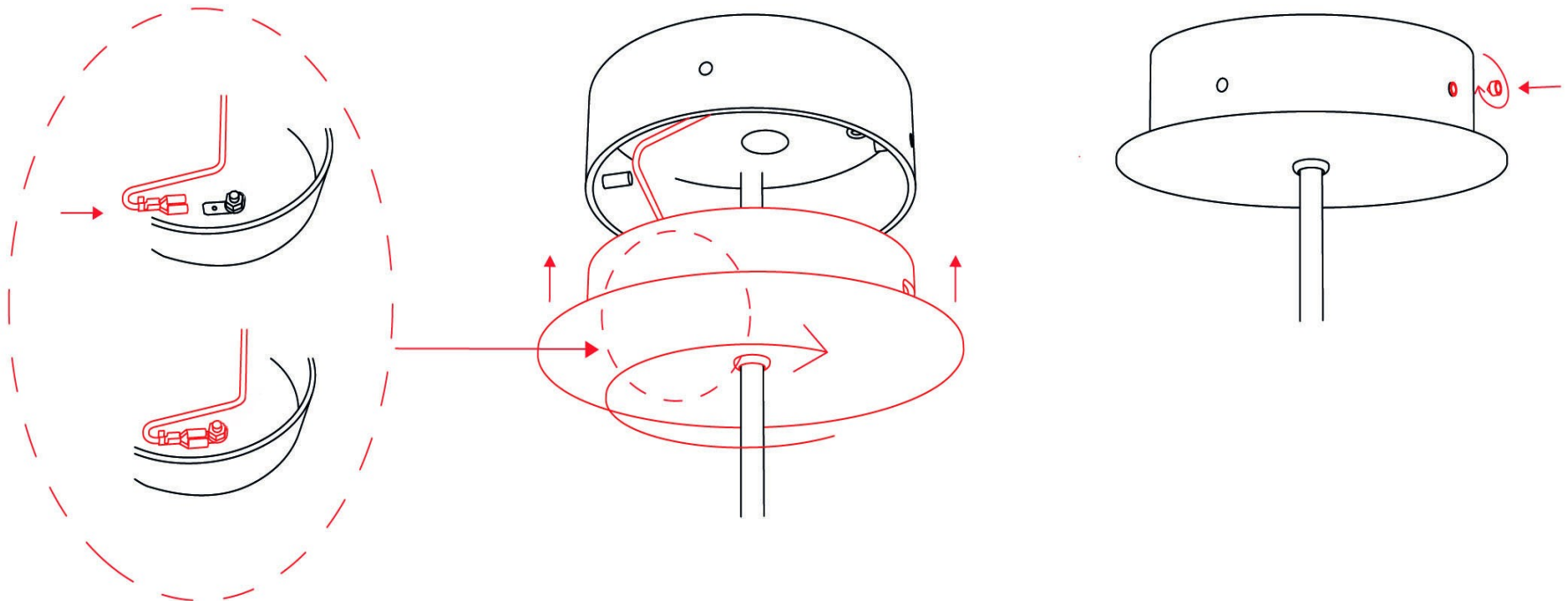
Connect the light to the building wiring according to the connection diagram.



4. INSTALLING THE CEILING CANOPY

Attach the ground wire to the ceiling canopy using the connector!

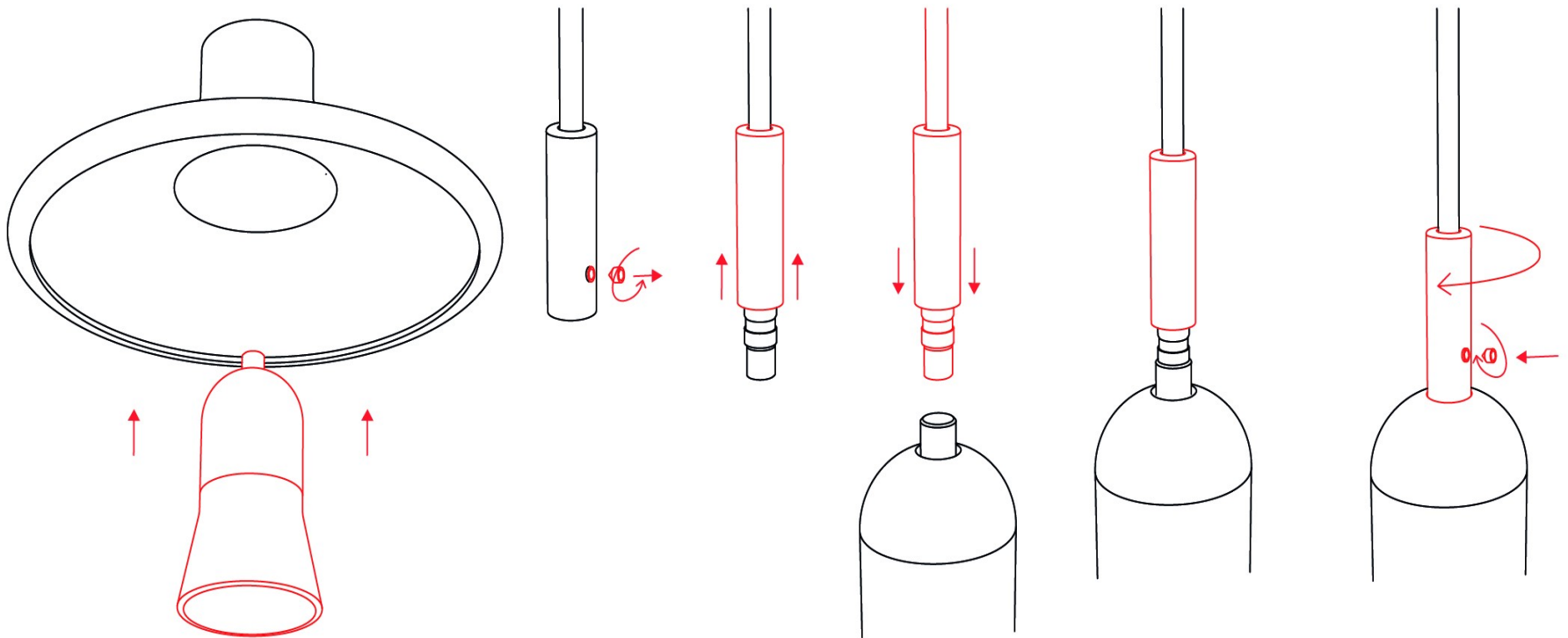
Position the ceiling canopy on the bracket and turn it clockwise to lock it in place. Secure the canopy with the M4x4 set screw to prevent it from turning.



5. ASSEMBLING THE LIGHT

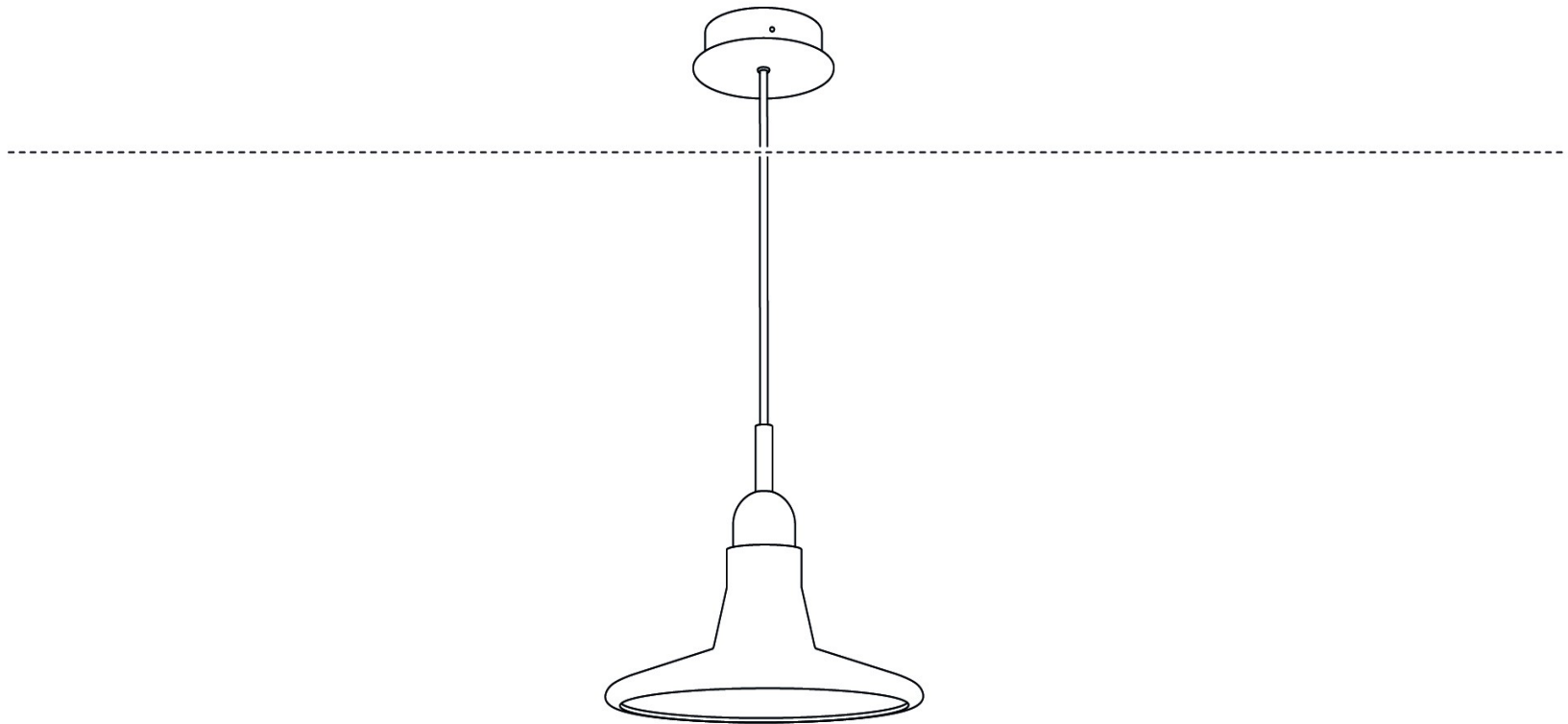
Gently lower the glass shade onto the metal fixture. If the shade is slightly off balance, carefully turn it on the metal fixture, or attach one of the silicone pads to the fixture beneath the glass.

Loosen the set screw in the connector on the power cable. Connect the power cable to the metal fixture. Each half of the connector (male/female) has a positioning mark to ensure a proper connection. An incorrect connection may result in the light not working. Screw on the metal connector cover and secure with the set screw.



6. SWITCHING ON THE LIGHT

Restore power at the main circuit panel and verify that the light works properly.

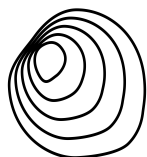




CLEANING THE GLASS

The light can be cleaned using common cleaning agents. Never use solvents or abrasives (scouring powder).

PRIOR TO SHIPPING, THE FUNCTIONALITY OF EACH LIGHT AND ITS COMPONENTS IS THOROUGHLY TESTED. THE MANUFACTURER ASSUMES NO LIABILITY FOR THE MISHANDLING OF PRODUCTS.



BROKIS®

BROKIS S.R.O.
ŠPANIELOVA 1315/25
163 00 PRAHA 6 - ŘEPY
CZECH REPUBLIC

ORG. ID 64940799
VAT ID CZ64940799
C 42174 MĚSTSKÝ SOUD
V PRAZE

TEL +420 567 211 517
TECHNICAL@BROKIS.CZ
INFO@BROKIS.CZ
WWW.BROKIS.CZ